

Welcome!

In *FIRST*® LEGO® League Discover, children are introduced to the fundamentals of STEM while working together to solve fun challenges and building models using LEGO® DUPLO® bricks. Students gain habits of learning, confidence, and teamwork skills along the way.

FIRST LEGO League Discover is one of three divisions by age group of the *FIRST* LEGO League program and serves the youngest children. This program inspires young people to experiment and grow their confidence, critical thinking, and design skills through hands-on STEM learning. *FIRST* LEGO League was created through an

alliance between *FIRST*® and LEGO® Education.



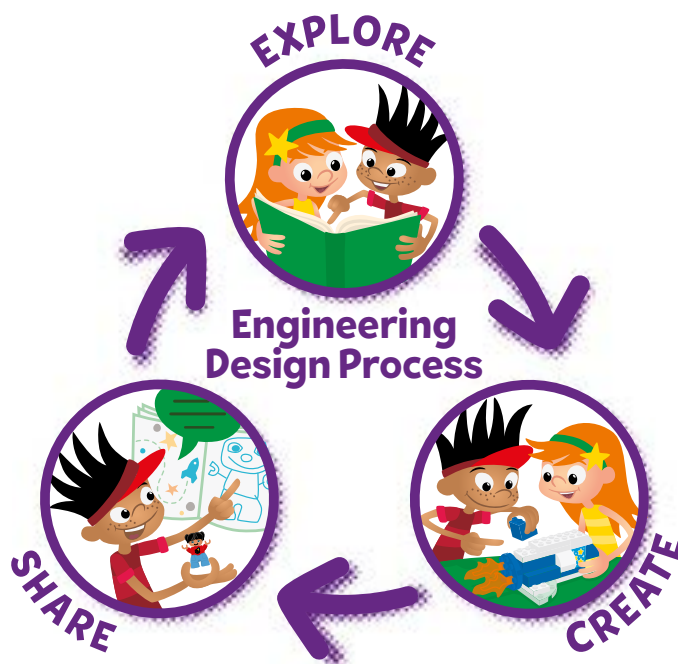
FIRST® DIVESM and SUBMERGEDSM

Welcome to the *FIRST*® DIVESM season presented by Qualcomm. This year's *FIRST* LEGO League challenge is called SUBMERGEDSM.

More than 80% of the ocean remains unexplored, offering curious minds deep opportunities to dive into expeditions. Children will explore beneath the ocean surface and learn how this

complex ecosystem is studied to support a healthy future for the plants and animals that live there.

Children will work together in teams using DUPLO pieces from STEAM Park by LEGO Education and the Discover set. Children should be encouraged to work with their teammates, listen to each other, take turns, and share ideas and pieces.

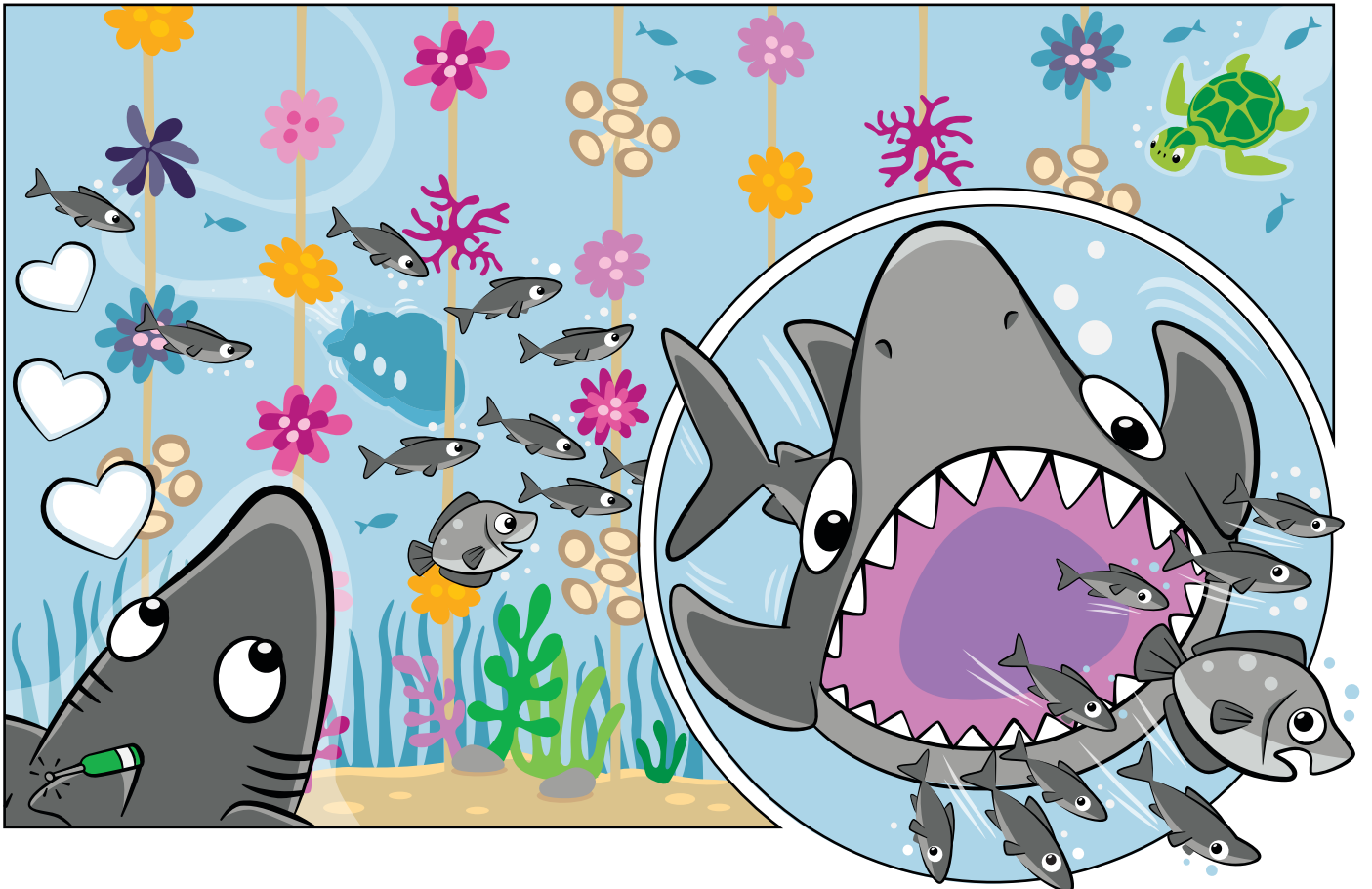
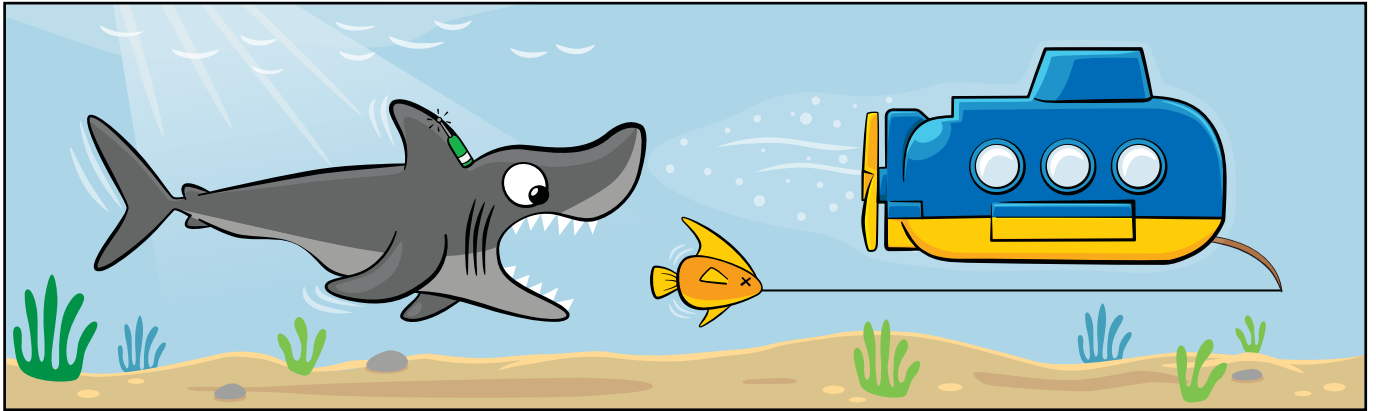
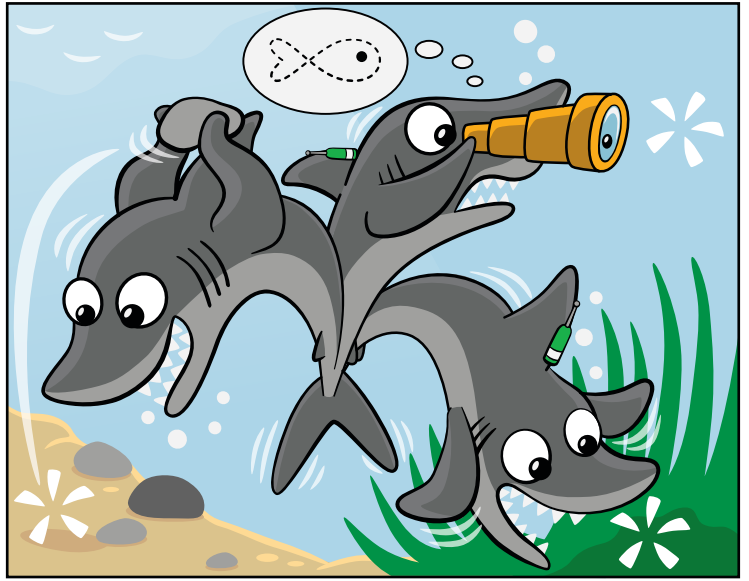
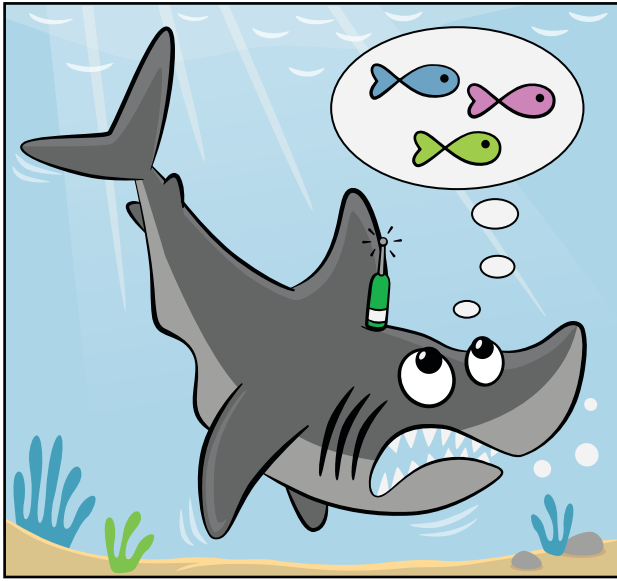


Program Outcomes

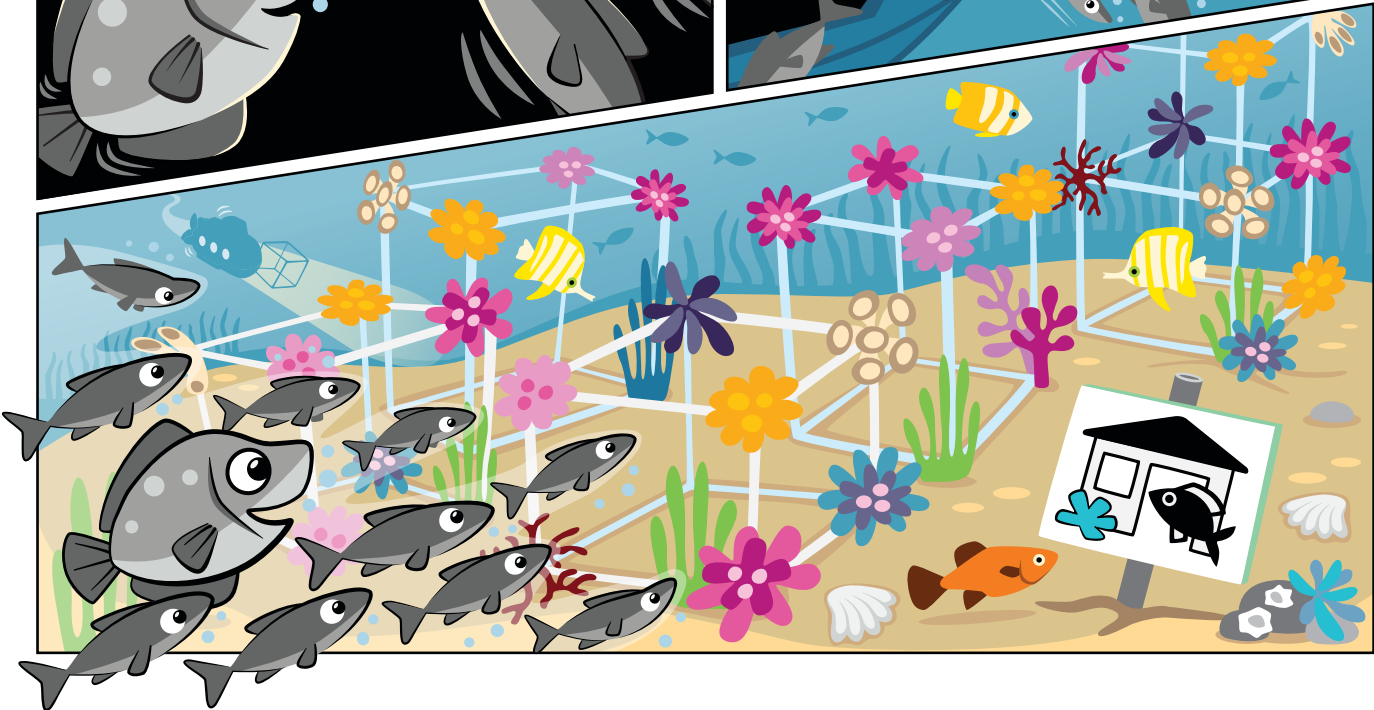
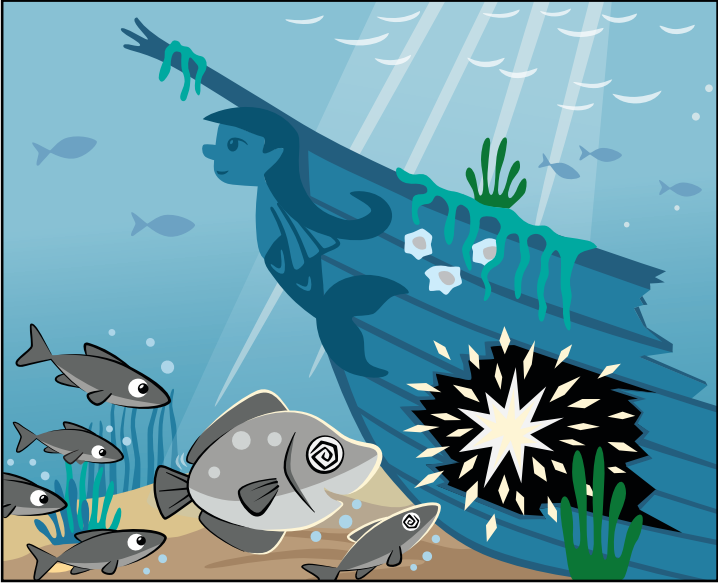
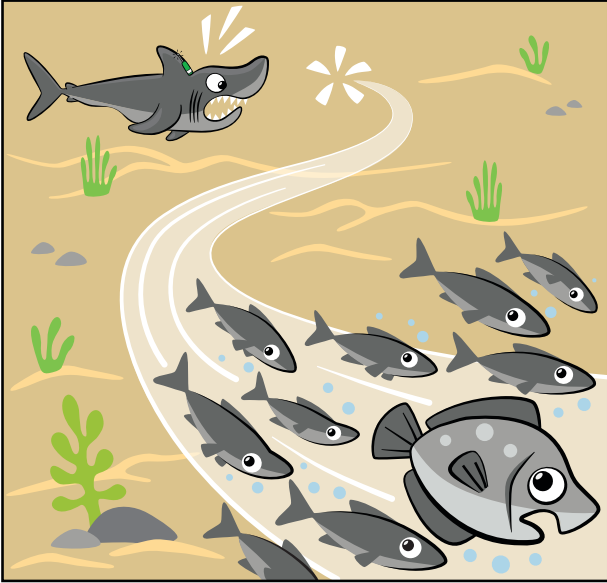
The children will:

- Use and apply the *FIRST* Core Values, habits of learning, and engineering design process to create solutions.
- Explore the season theme and their ideas through collaboration, building, and playful learning.
- Create and test their ideas and solutions.
- Share and communicate what they have learned with each other and others.

Discover Story



Discover Story



Discover Story



Discover Story

